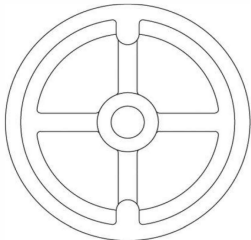
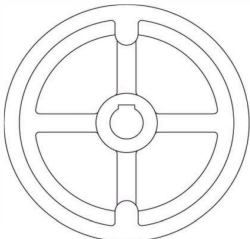


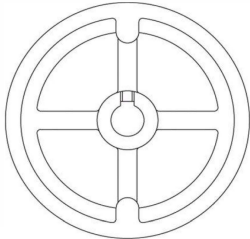
HAND-WHEEL MODIFICATIONS



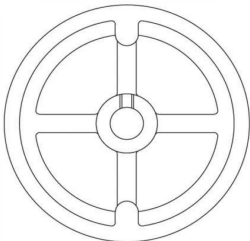
Bored Hole



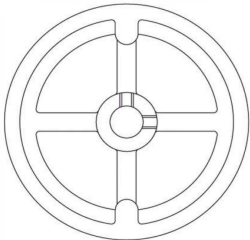
Bored Hole  
with Keyway



Bored Hole  
with Setscrew Hole  
over Keyway



Bored Hole  
with Setscrew Hole



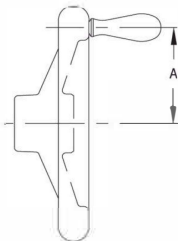
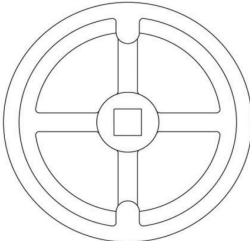
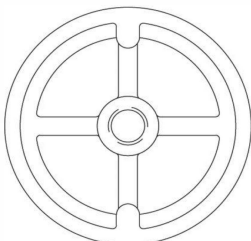
Bored Hole  
with 2 Setscrew Holes at 90°

BORE SIZE

HAND WHEEL DIA	STANDARD BORE SIZE (+0/-0.002)	MAXIMUM BORE SIZE
4	.375	.750
5	.375	1.000
6	.500	1.125
8	.625	1.375
10	.625	1.500
12	.750	2.000

KEYWAYS & SETSCREWS

BORE SIZE	STANDARD SQUARE KEYWAY	STANDARD SETSCREW HOLE
.375-.438	3/32	#10-32
.439-.562	1/8	#10-32
.563-.875	3/16	1/4-20
.876-1.250	1/4	5/16-18
1.251-1.375	5/16	3/8-16
1.376-1.750	3/8	3/8-16
1.751-2.000	1/2	1/2-13



TAPPED HOLE

HAND WHEEL DIA	AVAILABLE THREAD SIZES
4	3/8 to 3/4, M10 to M20
5	3/8 TO 1, M10 to M24
6	1/2 to 1-1/4, M12 to M30
8	1/2 to 1-3/8, M12 to M36
10	5/8 to 1-1/2, M16 to M36
12	3/4 to 2, M20 to M48

SQUARE HOLE

HAND WHEEL DIA	AVAILABLE SQUARE HOLE SIZES
4	1/2
5	1/2, 5/8
6	1/2, 5/8
8	1/2, 5/8
10	1/2, 5/8
12	1/2, 5/8

HANDLE INSTALLATION

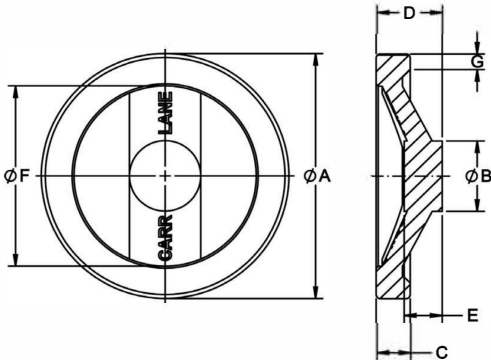
HAND WHEEL DIA	A
4	1-9/16
5	2
6	2-1/2
8	3-1/4
10	4-3/16
12	5-1/8

HAND WHEELS

ALUMINUM: PLAIN FINISH  
STAINLESS STEEL: PASSIVATED FINISH



High-quality, modern-design with the choice of aluminum or stainless steel Hand Wheel with two spokes. Rim is machined and highly polished on all sides. Spokes are shot blasted to a satin finish. Available in four sizes, from 5" to 10" diameter. These Hand Wheels are finish-bored to the standard shaft diameter for their size, exactly concentric and square to the rim, and can be tapped for a Solid or Revolving Handle (order separately). See Related Products below for matching solid-design stainless steel handles, and other handle options.



Inch-Aluminum

PART NO.	A DIA	B DIA	C	D	E	F DIA	G
CL-4-HWFA	3.94	1.22	.59	1.10	.709	2.72	.315
CL-5-HWFA	4.92	1.42	.67	1.30	.748	3.62	.315
CL-6-HWFA	5.90	1.42	.71	1.57	.827	4.41	.394
CL-8-HWFA	7.87	1.65	.83	1.97	.945	6.10	.433

Inch-Stainless Steel

PART NO.	A DIA	B DIA	C	D	E	F DIA	G
CL-4-HWFS	3.94	1.22	.59	1.10	.709	2.72	.315
CL-5-HWFS	4.92	1.42	.67	1.30	.748	3.62	.315
CL-6-HWFS	5.90	1.42	.71	1.57	.827	4.41	.394
CL-8-HWFS	7.87	1.65	.83	1.97	.945	6.10	.433

HAND WHEELS

BODY: BLACK FIBER-REINFORCED NYLON THERMOPLASTIC  
HUB: MILD STEEL, ZINC PLATED CLEAR CHROMATE

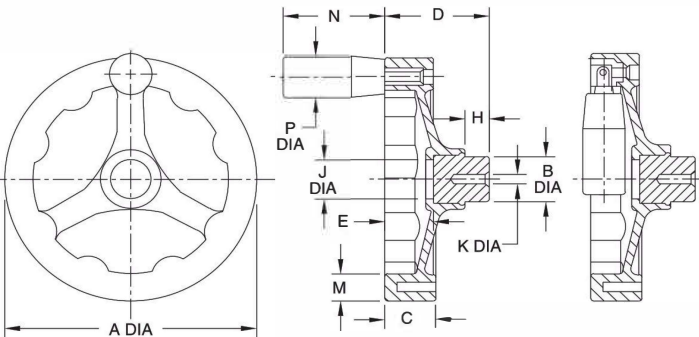


Angled-Spoke Square Design  
Thermoplastic  
with Revolving Handle



Angled-Spoke Square Design  
Thermoplastic  
with Foldable Revolving Handle

High-quality, thermoplastic Hand Wheel with three spokes, with contemporary design. Molded-in steel hub, blank with a pilot hole. Available with either a Revolving Handle, a Foldable Revolving Handle, or a plain rim without a handle. Matte black fiber-reinforced nylon thermoplastic (textured surface for secure gripping, excellent impact resistance, operating temperatures to 230°F).



PART NO.	PART NO. WITH FOLDABLE REVOLVING HANDLE	A DIA	B DIA	C	D	E	H	J DIA	K DIA	M	N	P DIA
CL-51-HWAS-P	CL-52-HWAS-P	4.92	.94	.94	2.01	.91	.47	.79	.157	.67	1.97	.83
CL-61-HWAS-P	CL-62-HWAS-P	6.30	1.26	1.10	2.40	1.18	.59	1.18	.236	.79	2.76	.91

HAND WHEELS

BODY: MATTE BLACK FIBER-REINFORCED NYLON THERMOPLASTIC  
HUB: MILD STEEL, ZINC PLATED CLEAR CHROMATE

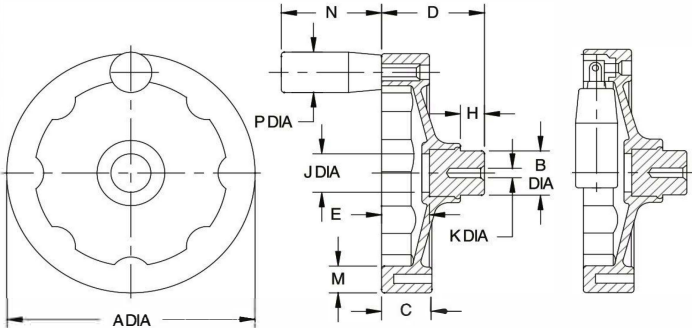


Solid Square Design  
Thermoplastic  
with Revolving Handle



Solid Square Design  
Thermoplastic  
with Foldable Revolving Handle

High-quality, thermoplastic Hand Wheel with contemporary design. Molded-in steel hub. These Hand Wheels are bored to the standard shaft diameter for their size. Available with either a Revolving Handle, a Foldable Revolving Handle, or a plain rim without a handle. Matte black high-impact thermoplastic (textured surface for secure gripping, excellent impact resistance, operating temperatures to 230°F).



PART NO. WITH REVOLVING HANDLE	PART NO. WITH FOLDABLE REVOLVING HANDLE	A DIA	B DIA	C	D	E	H	J DIA	K DIA	M	N	P DIA
CL-41-HWSS-P	CL-42-HWSS-P	3.94	.94	.79	1.81	.87	.47	.71	.157	.59	1.97	.83
CL-51-HWSS-P	CL-52-HWSS-P	4.92		.94	2.01	.91		.79	.236	.67		
CL-61-HWSS-P	CL-62-HWSS-P	6.30	1.26	1.10	2.40	1.18	.59	1.18	.236	.79	2.76	.91
CL-81-HWSS-P	CL-82-HWSS-P	7.87	1.57	1.26	2.91	1.34		1.38		.94	3.57	1.02

FLUTED HAND WHEELS

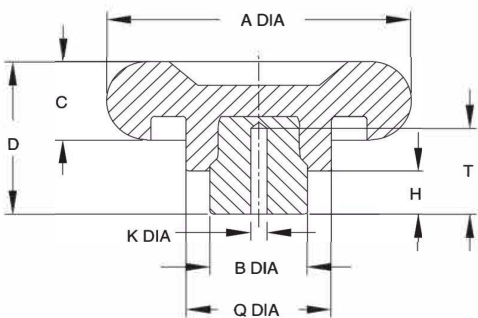
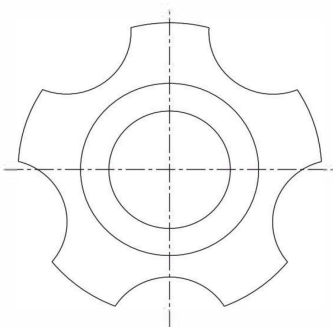
BODY: BLACK PHENOLIC PLASTIC  
HUB: MILD STEEL, ZINC PLATED CLEAR CHROMATE



CL-4-FHW



CL-3-FHW



Small five-lobed phenolic hand wheels that are useful as control knobs or clamping knobs. Available in two diameters. Molded-in steel hub, blank with a pilot hole. Black phenolic plastic (glossy smooth finish, extremely hard, electrical insulator, operating temperatures to 300°F, resistant to oils and most common chemicals).

PART NO.	A DIA	B DIA	C	D	H	K DIA	Q DIA	T
CL-3-FHW	2.95	.94	.79	1.54	.43	.157	1.34	.87
CL-4-FHW	3.54	1.26		1.65	.47	.236	1.73	.98